

{ MODERN DESIGN & DEVELOPMENT }

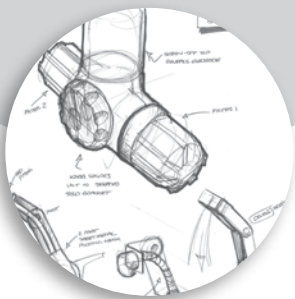
We have the unique ability to take your project from consumer research all the way through production implementation. Our holistic development process and integrated technologies ensure that the functional and emotional needs of the end user, commercial needs of the customer, and the realities of manufacturing are aligned to create innovative products. From concept development through manufacturing, our talented staff of experienced designers, engineers, and project managers is passionate about turning ideas into exceptional products.



{ THE PROCESS SETS US APART }

INDUSTRIAL DESIGN

Combining exceptional form with superior function to create products that demand your attention and provide the ultimate user experience. At Modern, we concern ourselves with the interaction of human factors (desirability), technical factors (feasibility), and business factors (viability) to optimize the appearance, function, and value of our customers' products. The integration of research networks, industrial design, design engineering, and manufacturing expertise creates product concepts that can be efficiently produced and commercialized.



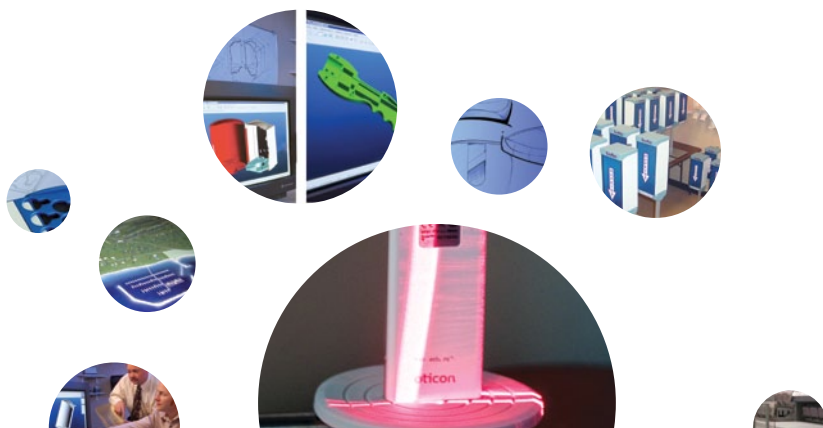
DESIGN ENGINEERING

Innovative solutions lead to exceptional products. This necessarily technical phase of development is still part of the creative process at Modern Design & Development. Through a research process, virtual prototyping, computer analysis, physical prototyping, and testing problems, are discovered and solved early, saving our customers time and money. Whether designing a single component or a complex mechanism with integrated electronics, our designers and engineers apply their technical expertise with a creative flair to provide innovative solutions.




DESIGN VERIFICATION/ PROTOTYPING

Get physical fast is the mantra at Modern. It is never too early to start evaluating form, fit, and function of a design. From the simplest sculpted form models, proof-of-concept models, test models to Looks Like/Works Like prototypes, Modern has the cutting edge technologies and craftsmanship to meet our customers' needs. Virtual prototypes, photorealistic rendering, Fused Deposition Modeling, RTV castings, CNC machining, Mold Flow Analysis, etc. are available to evaluate and validate designs.



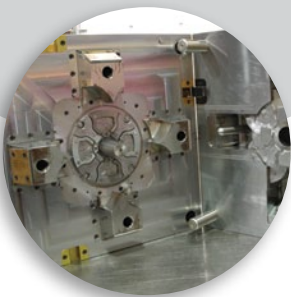


{ THINK BEYOND TRADITIONAL SERVICES }

- **Tradeshow Models and Training Aides** Our design, model fabrication, and rapid prototyping skills are brought together to generate maximum product impact. We produce creative and functional models, training aids, and demonstration displays.
- 

TOOLING DEVELOPMENT

Every project has unique requirements regarding tooling costs, product costs, and speed to market. Modern offers a variety of options and experienced consultation to develop and implement a plan that will work best for you. We provide rapid tooling, bridge tooling, or production tooling to get your products to market in the most efficient and cost-effective way possible.



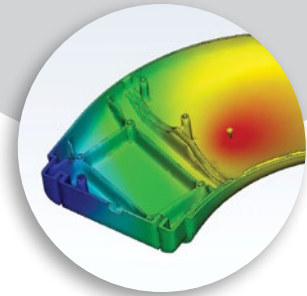
PRODUCTION IMPLEMENTATION

Innovative, exceptional product designs need these same qualities in their production implementation. Our project managers will plan and manage a seamless transition from design into production. Working with the Modern Plastics production team, the project manager will coordinate all activities needed to ensure a successful production launch of your new, innovative, exceptional product.



PRODUCT TESTING

Functional testing of prototypes and competitive products is managed and performed by an independent test lab within WPI. All testing is done in a secure facility managed to protect the confidentiality of our customers' projects. This independence and security ensures unbiased test data for our development teams and customers.



{ INTEGRATED TECHNOLOGY }

- **FUSED DEPOSITION MODELING** This allows us to offer rapid prototypes in actual production materials such as ABS, Polycarbonate, PC/ABS, and others. With multiple machines and a maximum build envelope of 16-inch x 14-inch x 16-inch high, we can get physical fast. Larger parts can be built in sections and adhesively assembled.
- **3D LASER SCANNING** Our 3D laser scanner captures objects in full color with multi-laser precision of 0.005 inch. We use it to provide reverse engineering services and to create 3D digital databases for products, concepts, tooling components, and legacy product documentation. Innovatively integrated with our fabrication, tooling, and injection molding technologies to create exceptional products.
- **DIRECT DIGITAL MANUFACTURING** When production volumes are low and/or part geometry is complex, we are a very economical choice. We can design with greater complexity, distinctiveness, and increased flexibility in features and function. We offer the opportunity to create unique products that could not be manufactured with traditional processes.
- **MOLD FLOW ANALYSIS** We analyze to optimize. We have integrated this predictive analysis tool into our design process to optimize the combined effects of part geometry, polymer selection, mold design, and processing parameters. This helps avoid the costs and delays of reworked tools, scrap, and a less-than-optimal molding process.



MODERN DESIGN & DEVELOPMENT | MODERN PLASTICS | MODERN STAMPING & PAINTING

At its core, WPI is an idea company. Our people, our drive to innovate, and our technologies are what turn those ideas into exceptional products. **We Provide Innovation.**

MODERN  design &
a division of WPI development

3155 COMMODITY LANE, GREEN BAY, WI 54304 PHONE 920 337 2202 FAX 920 337 0594
WWW.WPIMODERN.COM